

**Millimeter Adapter**  
**2.4mm to 2.4mm Series**

**Specifications:**

Impedance= 50 ohms

Frequency= DC - 40GHz

Durability > 500 cycles

VSWR:  $\leq 1.15$

Contact resistance:

Center conductor  $\leq 3m\ \Omega$ , outer conductor  $\leq 2.5m\ \Omega$

Insertion loss  $\leq 0.04\sqrt{f(\text{GHz})}\text{dB}$

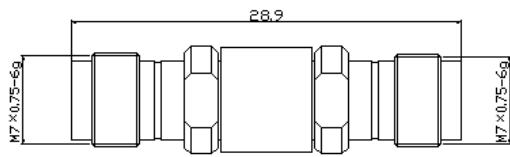
Dielectric withstand voltage: 500V

**Material / Finish**

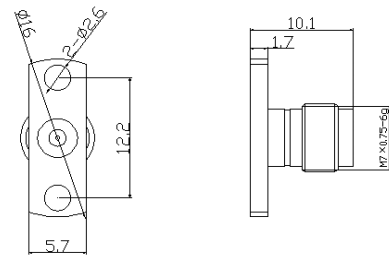
Housing: Stainless steel passivation

Center Contact: Beryllium Copper Gold plated

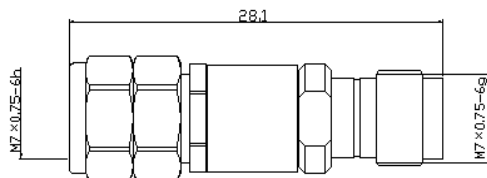
Insulators: PEI and PTF



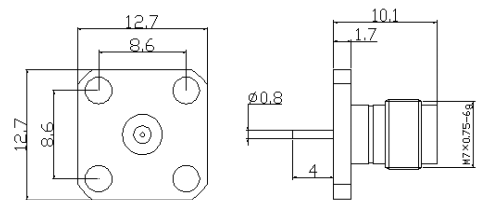
**TW2.4K-2.4K**



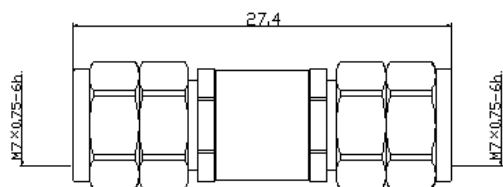
**TW2.4KF01**



**TW2.4J-2.4K**



**TW2.4KF02**



**TW2.4J-2.4J**